

Model PW: Radial Blade Pressure Blowers

The Model PW is typically used on industrial applications for small exhaust systems where air is laden with dust or grit and also for supplying high pressure air for conveying and cooling.



Wheels: Constructed with straight radial blades of heavy cast aluminum for self cleaning feature, dynamically balanced and designed for efficient operation.

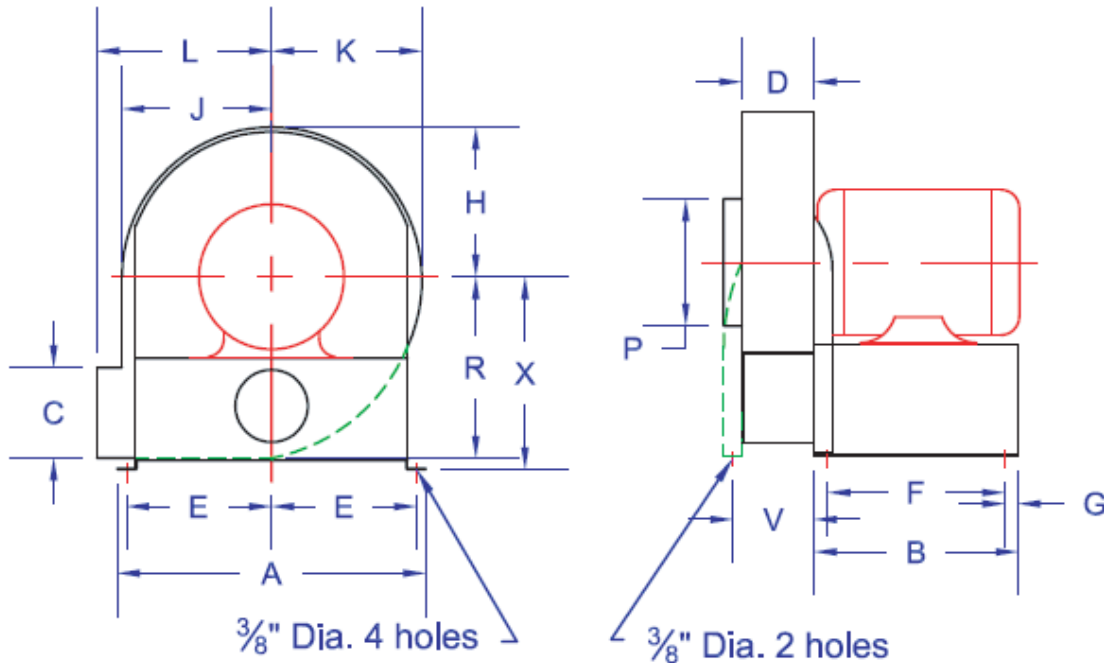
Housings: Arc welded 16 guage steel housings and motor bases for rigidity and long life.

Rotation and Discharge: Furnished for clockwise rotation, bottom horizontal discharge unless otherwise specified. At time of installation, housings or wheels may be turned for other discharges and rotation.

Motors: Various voltages and enclosures available.

Model Number			H.P.	Motor Frame	RPM	CFM @ Static Pressure											dBA @ 5 ft.
Single Phase	Three Phase 208/230/460	Three Phase 575				1"	1.5"	2"	2.5"	3"	3.5"	4"	5"	6"	7"	8"	
PW-8-1X2V	PW-8-2X4V	PW-8-575V	1/3	56	3600	295	265	230	200	165	125	-	-	-	-	-	74
PW-9-1X2V	PW-9-2X4V	PW-9-575V	1/3	56	3600	525	495	470	440	405	380	330	200	-	-	-	77
PW-11-1X2V	PW-11-2X4V	PW-11-575V	1	56	3600	800	770	740	705	680	640	600	500	400	300	-	84
PW-12-1X2V	PW-12-2X4V	PW-12-575V	3	182T	3600	1190	1160	1130	1100	1065	1030	1000	930	860	780	690	90
PW-14-230V*	PW-14-2X4V	PW-14-575V	5	184T	3600	2280	2230	2180	2130	2070	2020	1960	1840	1720	1570	1400	92

* 208-230 Volt Only



Blower	Wheel	Bore	A	B	C	D	E	F	G	H	J	K	L	P	R	X	V	Motor Frame
PW-8	7 3/4 X 2 1/4	1/2	11	8	3	3	5	7	1/2	5 3/8	4 7/8	5 7/8	5 7/8	4	6 5/8	9	-	56
PW-9	9 X 2 3/4	1/2	12 1/8	8	3 1/2	3 1/2	5 5/8	7	1/2	6 3/8	5 3/4	6 7/8	6 3/4	5	7 1/2	9 7/8	-	56
PW-11	10 5/8 X 3	5/8	14 3/4	9	4	3 1/2	6 7/8	7 1/2	3/4	7 1/4	6 1/2	8	7 5/8	6	8 5/8	11 3/4	-	56
PW-12	12 1/2 X 3	7/8	17	11 1/4	5	4	8	9 3/4	3/4	8 1/4	7 1/2	9	9 5/8	7	10	10 5/8	-	182T
PW-14	13 1/2 X 4 3/8	1 1/8	17 5/8	11 1/4	7 1/8	5 3/4	8	9 9/16	1	10 5/8	9 5/8	11 3/8	11	8	11 1/2	12 5/8	7 1/4	184T